

Alu-Cab™

ULTIMATE OVERLAND PRODUCTS



TENTS • AWNINGS • CAMPERS • CANOPIES • ACCESSORIES

Distributed by  IRONMAN
4x4



Alu-Cab™

ULTIMATE OVERLAND PRODUCTS

Our journey to overland and adventure began more than 20 years ago with the release of the first-ever aluminium canopy, designed for off-road use.

Overtime, we've strengthened and refined our core range, while adding new innovative vehicle accessories and conversions for the ultimate overland adventure.

To this day, all Alu-Cab products are designed, engineered and hand-crafted in South Africa, ensuring integrity and quality in each and every detail.

With literally millions of off-road miles travelled across Africa, Australia, Europe, and the Americas, we invite you to join the #Overland Evolution with Alu-Cab.



Distributed by  **IRONMAN**
4x4

All prices quoted do not include freight or fitting (unless specified) are inclusive of GST and are subject to change without notice. Some products may vary depending on vehicle model.

Roof Top Tents and Awnings



“While aluminium canopies defined our origins, it’s the way we’ve refined, strengthened and accessorised our canopies that’s unleashed the true power of Alu-Cab”

Jeremy Bergh, CEO & Founder





GENERATION 3.1 EXPEDITION TENT

FUNCTIONAL COMFORT AND CONVENIENCE

Designed for single person set up, opening and closing in seconds

Manufactured from dual layer 400gsm UV resistant rip stop canvas with sealed seams

Internal LED lights, USB ports and 12V sockets

3 zippered access points feature midge proof mesh screens

Roof load rated to carry 50kg

Quick release comfort telescopic ladder stows inside tent

TECHNICAL SPECS

LENGTH:

Internal: 2100mm L x 1300mm W

External: 2300mm L x 1400mm W

HEIGHT:

Closed: 210mm (front) / 280mm (rear)

Open: 2000mm (external) / 1600mm (internal)

WEIGHT:

88kg (approx)

MATTRESS:

70mm high density foam

COLOURS:

Silver or Black



SIDE ENTRANCE RAIN COVER

- Manufactured from 315gsm rip stop canvas with sealed seams
- Provides further protection from the elements
- Compatible to suit Gen 3 and 3.1 Expedition Tent, mounting to either left or right hand side entry ways
- Rolls up for easy set up and pack up



REMOVEABLE GRAB HANDLE

- Provides assistance when accessing the roof of the Gen 3 and 3.1 Expedition Tent
- Grab handle side mounting bracket included, additional tent side mounting brackets available separately
- Black textured smooth finish



TELESCOPIC LADDER

- Height adjustable allowing for various fitment heights
- Broad and angled rungs for comfortable climbing
- Load rated to 150kg

270° SHADOW AWNING

SINGLE PERSON OPERATION

- Free standing awning, designed for single person set up
- Lightweight aluminium construction
- Manufactured from 315gsm heat reflective canvas
- Integrated drop down leg, guy ropes and pegs for windy conditions
- Awning stowes in heavy duty zippered PVC bag

TECHNICAL SPECS

SIZE:

Closed: 2600mm L x 135mm W x 220mm H

WEIGHT:

24kg approx

SHADE:

10m² when open

ORIENTATION:

Left or right hand side fitment available

MOUNTING BRACKETS:

Various options available





270° SHADOW AWNING MOUNTING BRACKETS from

Manufactured from stainless steel

Available to suit the Alu-Cab range and a range of popular roof racks and cross bars



270° SHADOW AWNING SIDE WALL KIT

Provides complete privacy and protection from the elements

Features 3 windows and main entrance door

Manufactured from 190gsm ripstop canvas

Attaches via heavy duty velcro

Includes 2 additional support poles for integration

TECHNICAL SPECS

BAG SIZE:

600mm L x 300mm W x 300mm H

WEIGHT:

15.2kg approx

MOUNT HEIGHT:

1900mm - 2100mm



270° SHADOW AWNING GUTTER KIT

Providing further protection from the elements, closing the gap between rear of vehicle and awning

Attaches via supplied sail track and heavy duty velcro

Compatible to suit Expedition Roof Top Tent, Canopy Camper, Hercules and Icarus Roof Conversion, and Explorer Canopy



270° SHADOW AWNING STORM KIT

Provides additional anchorage in strong winds and stormy conditions

Prevents rain water pooling on awning canvas

Quick and simple setup

TECHNICAL SPECS

BAG SIZE:

340mm L x 50mm W x 185mm H



270° SHADOW AWNING POLE KIT

Provides additional support to the 270° Shadow Awning when needed

Integrates with 270° Shadow Awning arms as a drop down pole for easy set up and pack up

Includes 2 height-adjustable poles



Canopy Camper and Canopies

“Hand-Crafted in South Africa, every Alu-Cab product is manufactured under the strictest conditions to ensure quality, integrity and durability”

Warwick Leslie, Managing Director





Alu-Cab

DW 17 ZB GP

62 ZA

CANOPY CAMPER - DELUXE

(Dual Cab) (Extra Cab)

Easy access vertical rear door with heavy duty hinges allows fitment of 33" spare wheel
Manufactured from dual layer 400gsm UV resistant rip stop canvas with sealed seams
Internal LED lights, USB ports, 12V sockets and solar pre-wired
Bedding can remain in place when tent roof is closed, or when bed is flipped up for ample internal living space
Oversized gullwing canopy doors allow unobstructed access
Roof load rated to carry 50kg

INCLUDES

270° Shadow Awning and Mounting Bracket, Twin Midge Net Kit, Canvas Pockets, Molle Plate and Fitment Kit

TO SUIT DUAL CAB

Ford Ranger 2012+
Holden Colorado 2012+
Isuzu D-Max 2012+
Jeep Gladiator 2020+
Mazda BT50 2012+
Nissan NP300 2016-2019
Toyota Hilux SR5 2005+
Volkswagen Amarok 2010+

TO SUIT EXTRA CAB

Ford Ranger 2012+
Mazda BT50 2012-2019
Toyota Hilux SR5 2005+

TECHNICAL SPECS

CLOSED:

2865mm L x 1600mm W x 1365mm H

HEIGHT OPEN:

2520mm

BED SIZE:

2600mm L x 1340mm W

WEIGHT SHELL:

250kg approx

MATTRESS:

70mm high density foam

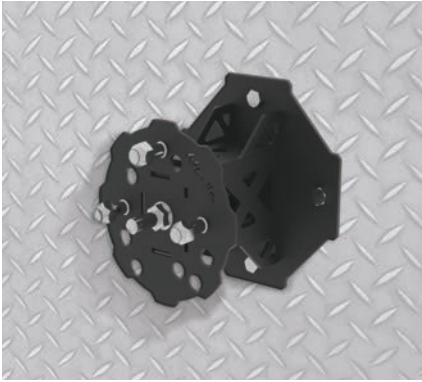
COLOURS:

Silver or Black

ACCESSORIES OVER PAGE



CANOPY CAMPER - DELUXE ACCESSORIES



SPARE WHEEL BRACKET

Multi fit spare wheel PCD stud system layout provides flexibility for various rim mounting

Designed to suit canopy camper with fitment of up to a 33" wheel

Clamping feature allows wheel to be securely held in place, removing vibrations that can lead to part failure

Ability to tighten wheel against the wheel bracket

TECHNICAL SPECS

WEIGHT:

8.8kg approx



WATER TANK & CANVAS POCKET KIT

Manufactured from food grade UV stabilised LLDPE, ensures clean, taste free water

50L water tank capacity

Designed to mount internally up front in both dual cab and extra cab canopy campers maximising space

Four brass 1/2" female ports are located in each corner to suit various requirements

Stainless steel mounting hardware, breather assembly, outlet fittings and lockable tap supplied

TECHNICAL SPECS

SIZE:

1468mm L x 150mm W x 665mm H

WEIGHT:

24kg (empty) 74kg (full)

Not compatible with Toyota Landcruiser



CANOPY CAMPER SIDE DOOR GRID

Providing quick and easy access to organised gear when you need it most

Designed to mount internally to the underside of the canopy camper gull wing side door

Includes replacement side door gas struts to assist opening with the added weight

Load rated to 20kg

TECHNICAL SPECS

SIZE:

1158mm L x 495.5mm W

WEIGHT:

4kg approx



CANOPY CAMPER MIDGE NET

- Available as a kit to suit Canopy Camper windows or a kit to suit the Canopy Camper rear door
- Keeps midges, and bugs out whilst allowing fresh air inside
- Includes heavy duty canvas block outs, which can be rolled up
- Attaches via self adhesive velcro
- Midge netting features heavy duty zippered opening, which can be rolled up

Canopy Camper Window Midge Net Kit (x2)

Rear Door Kit

TECHNICAL SPECS

SIZE:

Canopy window (x2) kit: 1420mm L x 600mm H
Canopy rear door kit : 1170mm L x 980mm W

Compatible with dual cab and extra cab canopy campers



CANOPY CAMPER TABLE SLIDE

- Lightweight aluminium construction
- Maximising unutilised space, mounting to the underside of the canopy camper above the vehicles cabin

TECHNICAL SPECS

SIZE:

1443mm L x 771mm W x 44mm H

Compatible with:

Ford Ranger 2012+
Isuzu D-Max 2020+
Mazda BT50 2012-2019
Toyota Hilux SR5 2005+

*Table not included

EXPLORER CANOPIES

(Dual Cab) (Extra Cab)

Aluminium construction, superior strength to weight ratio
Centre flex water proof hinges to prevent rain dripping in when doors are opened
Oversized gullwing canopy doors with keyed alike tamper proof locks
Integrated roof rails for easy installation of roof rack or cross bars
Roof load rated to carry 150kg

TECHNICAL SPECS

Available to suit a range of dual and extra cab vehicles

WEIGHT:

Dual Cab: 60kg approx

Extra Cab: 70kg approx

COLOURS:

Black or Silver in a Tread or Smooth finish

Sliding side and front windows optional each





ACCESSORIES OVER PAGE



EXPLORER CANOPIES ACCESSORIES



CUPBOARDS -

Lightweight, strong, aluminium and 304 food grade stainless steel construction

Maximises space utilisation

Access a useful amount of storage space without having to reach inside the canopy load bin

Available in 2 sizes

750mm cupboard to suit standard

1250mm cupboard to suit standard

TECHNICAL SPECS

SIZE:

750mm L x 440mm W x 275mm H

WEIGHT:

6kg approx

SIZE:

1250mm x L x 440mm W x 275mm H

WEIGHT:

7kg approx

CUPBOARD - RECOVERY KITTING

Lightweight, strong, aluminium and 304 food grade stainless steel construction

Cupboard backing features a grid design allowing you to secure essential gear in place

Features cargo rail extrusions providing various tie down points with the use of M8 eye nuts and straps

TECHNICAL SPECS

SIZE:

750mm L x 440mm W x 275mm H

WEIGHT:

11kg approx

CUPBOARD - KITCHEN KITTING

Lightweight, strong, aluminium and 304 food grade stainless steel construction

Geared with the essentials to serve four people

TECHNICAL SPECS

SIZE:

750mm L x 440mm W x 275mm H

WEIGHT:

15kg approx



CANOPY TABLE BRACKETS

Maximises space utilisation

Mounting to the underside of the canopy roof, allowing you to store the Alu-Table out of the way



CANOPY SECURITY WINDOW GRID

Acts as a protective safety barrier

Heavy duty steel grid and alloy brackets powder-coated black

Secures to the interior window of Explorer canopies

TECHNICAL SPECS

SIZE:

1045mm L x 366mm H x 8mm W

WEIGHT:

2.5kg approx

Not compatible with Mitsubishi Triton, and Toyota Landcruiser

Roof Top Conversions





“Simple, lightweight and versatile our conversions redefined the roof-top tent experience”

Jeremy Bergh, CEO & Founder





HERCULES ROOF CONVERSION

*INCLUDES FITMENT AND ENGINEER SIGN OFF

Aerodynamic aluminium construction, designed for single person set up, opening and closing in seconds

Manufactured from dual layer 400gram UV resistant rip stop canvas with sealed seams

Internal LED lights

Bedding can remain in place when tent roof is closed, or when bed is flipped up for ample internal living space

Roof load rated to carry 50kg

TECHNICAL SPECS

CLOSED:

2835mm L x 1420mm W x 225mm H

ADDED HEIGHT:

140mm

BED SIZE:

2400mm L x 70mm W x 1160mm H

COLOURS:

Black, White or Sandy Taupe



ICARUS ROOF CONVERSION

***INCLUDES FITMENT AND ENGINEER SIGN OFF**

Aerodynamic aluminium construction, designed for single person set up, opening and closing in seconds

Manufactured from dual layer 400gram UV resistant rip stop canvas with sealed seams

Internal LED lights

Bedding can remain in place when tent roof is closed, or when bed is flipped up for ample internal living space

Roof load rated to carry 50kg

TECHNICAL SPECS

CLOSED:

2815mm L x 1470mm W x 390mm H

ADDED HEIGHT:

180mm

BED SIZE:

2370mm L x 70mm W x 1250mm H

COLOURS:

Black or White





ICARUS

Alfa Co.

CA-438-136

Alu-Cab Accessories





“Space and weight are the two greatest hurdles facing overland travellers - our accessory range can help you solve both”

Jeremy Burgh, CEO & Founder

ACCESSORIES



LOAD BARS

Lightweight, strong, aluminium construction
3 unique 8mm bolt/nut channels provide a number of opportunities to attach gear to the load bar
Static load rated to 200kg
Set of 2 load bars, available in 2 lengths
- 1250mm / 1450mm
Optional mounting feet available, low profile, high profile, and extra high profile

1250mm L

1450mm L

Low Profile Feet 3mm H

High Profile Feet 40mm H

Extra High Profile Feet 60mm H

TECHNICAL SPECS

SIZE 1250mm:

1250mm L x 70mm W x 20mm H

SIZE 1250MM:

1450mm L x 70mm W x 20mm H

STATIC LOAD RATING:

200kg

COLOURS:

Black or Silver



SHOWER CUBE

Lightweight aluminium and stainless steel construction
Quick dry shower curtain with built in base weights
Side entry access points
Adjustable tie down points to accommodate varying vehicle ride heights
Shower cube stows in heavy duty zippered PVC bag

TECHNICAL SPECS

SIZE:

Closed: 1055mm L x 119mm W x 187mm H

Open: 1096mm L x 929mm W x 1917mm H

WEIGHT:

9kg

ORIENTATION:

Left or right hand side fitment available

MOUNTING BRACKETS:

Various options available



SHOWER CUBE MOUNTING BRACKETS from

Manufactured from stainless steel
Available to suit the Alu-Cab range and a range of popular roof racks and cross bars



TILTING FRIDGE SLIDES -

Lightweight, strong, aluminium / stainless steel construction

Operates as a straight slide out, or slide out and tilt

Tilting option allows for easier access to fridge

Double locking pins secures the slide firmly in place

Available in 3 sizes

TECHNICAL SPECS

SIZE:

FS1 (COMMONLY SUITS 45-60L)

External dimensions: 782mm L x 525mm W

Internal dimensions: 720mm L x 440mm W

WEIGHT:

10kg approx

FS2 (COMMONLY SUITS 60-70L)

External dimensions: 863mm L x 585mm W

Internal dimensions: 800mm L x 500mm W

WEIGHT:

11kg approx

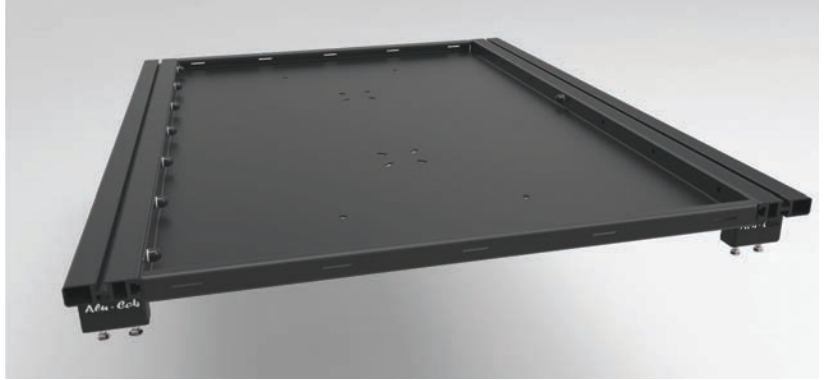
FS3 (COMMONLY SUITS 80L)

External dimensions: 963mm L x 635mm W

Internal dimensions: 900mm L x 550mm W

WEIGHT:

12kg approx



ROOF RACK TRAY

Provides additional storage space for lightweight bulky items that are difficult to fit in the cabin of a vehicle

Lightweight, strong, aluminium construction

Mounts together with the Alu-Cab Load Bars (load bars not included)

Load rated to 100kg

Optional Alu-Table mount compatibility to the underside of the roof rack tray with use of the Extra High Profile Feet

TECHNICAL SPECS

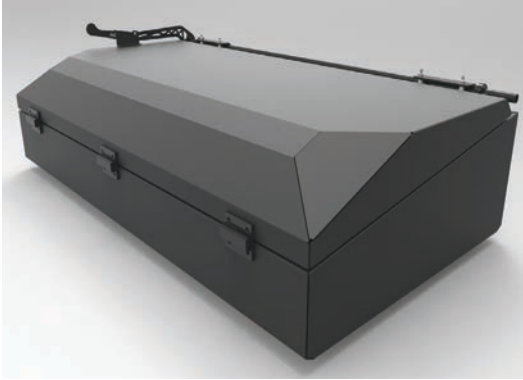
SIZE:

Internal dimensions: 1252mm L x 780mm W x 33mm H

WEIGHT:

10kg approx

ACCESSORIES



STORAGE ROOF BOX

-

Fully sealed units allows you to safely stow extra gear away from the elements

Lightweight, strong, aluminium construction

Mounts together with the Alu-Cab Load Bars (load bars not included)

Sophisticated opening and closing lever system allows you to access the box from one side

Available in 2 sizes - 200L or 250L

SMALL 200L

LARGE 250L

TECHNICAL SPECS

SIZE 200L:

1305mm L x 330mm W x 533mm H

WEIGHT:

19.5kg approx

SIZE 250L:

1305mm L x 330mm W x 705mm H

WEIGHT:

21kg approx



JERRY CAN HOLDER

Lightweight, strong, aluminium / stainless steel construction

Features quick release stainless steel locking strap and locking catch

Designed to suit a 20L jerry can

Mounts vertically or horizontally

TECHNICAL SPECS

SIZE:

360mm L x 215mm W x 550mm H

WEIGHT:

3.2kg



ALU-TABLE

Lightweight, strong, aluminium construction

Opens and closes via gas struts reducing set up and pack down effort

Table top features rigidised aluminium providing a sturdy surface and high heat resistance for cooking preparation

TECHNICAL SPECS

SIZE:

Closed: 1175mm L x 750mm W x 28mm H

Open: 1175mm L x 750mm W x 770mm H

WEIGHT:

7.5kg approx



SIDE SLIDE PREP TABLE

- Lightweight, strong, aluminium construction
- Quickly attaches to the side of canopy or canopy camper via alloy sail track
- Providing handy bench space for those quick roadside coffee stops
- Stows internally to the underside of the canopy gull wing side door with supplied bracket

TECHNICAL SPECS

SIZE:

Closed: 600mm L x 300mm W x 40mm H
Working space: 600mm L x 300mm W



RECOVERY TRAX BRACKET

- Lightweight, strong, aluminium / stainless steel construction
- Quick release handle, makes for quick access
- Designed to mount to the Alu-Cab Roof Box, roof racks or the side of your vehicle
- Padlock compatibility
- Able to hold up to four Recovery Tracks

TECHNICAL SPECS

SIZE:

External: 370mm L x 505mm W
Internal: 1270mm x 375mm x 84mm H



VICTORIA

2-8 Bessemer Drive,
Dandenong South, VIC 3175

NEW SOUTH WALES*

22 Yilen Close,
Beresfield, NSW 2322

QUEENSLAND

160 Robinson Road East,
Geebung, QLD 4034

QUEENSLAND*

127 Crocodile Crescent,
Townsville, Queensland 4818

SOUTH AUSTRALIA*

36 Millers Road,
Wingfield, SA 5013

WESTERN AUSTRALIA

Cnr Baile Road and Craft Street,
Canning Vale, WA 6153

* Distribution centre only

Distributed by



PRODUCTS AVAILABLE FROM OVER 800 STORES AUSTRALIA-WIDE
FOR YOUR NEAREST DISTRIBUTOR, CALL 1300 731 137 OR VISIT US AT
www.alu-cab.com.au

